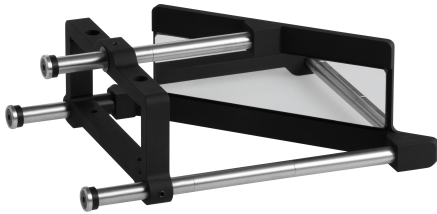


CMMR4K120-L | DATASHEET

45° first surface mirror for 144.0 x 38.5 mm clamping diameter optics, right angle lateral bend



KEY ADVANTAGES

Reflect light at 90°.

Ideal for **limited space**.

Easy and secure clamping system.

Compatible with telecentric lenses and illuminators.

Optional **protective windows** available.



CMMR series is the Opto Engineering® answer to tight space integration issues, opening new installation options for your application.

SPECIFICATIONS

Optical specifications

Coating	Aluminium reflective coating, R>90%, bandwidth 430-670 nm	
Deviation angle	(°)	90
Protective windows	No	

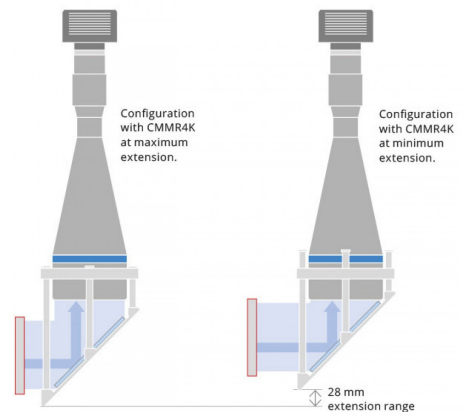
Mechanical specifications

Clamping size	(mm)	144.0 x 38.5
Clamping system	mounting screws	
Working distance difference ¹	(mm)	155.3
Length	(mm)	242.0
Width	(mm)	187.6
Height	(mm)	72.0
Mass	(g)	658

¹ Value to be subtracted from the objective or illuminator working distance when the CMBS is used

CMMR SETUP

CMMR4K-L bends the light rays laterally.
LEFT BEND



COMPATIBLE PRODUCTS

Full list of compatible products available [here](#).



A wide selection of innovative machine vision components.